

Universal Unrestrained Expansion Joints

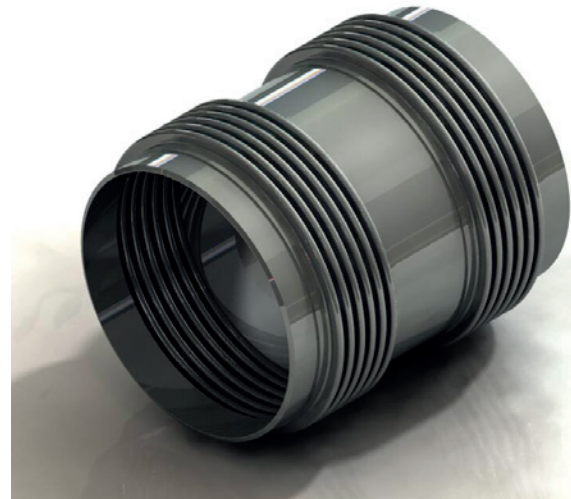
MWD & MFD Series

DESCRIPTION

Also known as the UNIVERSAL UN-TIED EXPANSION JOINT this model is made up of two bellows joined together by a central pipe.

Although it can be used to absorb any combination of the three basic movements it is mainly used to absorb large LATERAL MOVEMENTS. The amount of lateral deflection that can be accepted is a function of the degree of angulation each bellows can absorb and the distance between the bellows or length of the central pipe.

It does not restrain pressure thrust so adequate anchors and guides must be provided and they can be used only in a piping systems that incorporate correctly designed anchors and pipe alignment guides

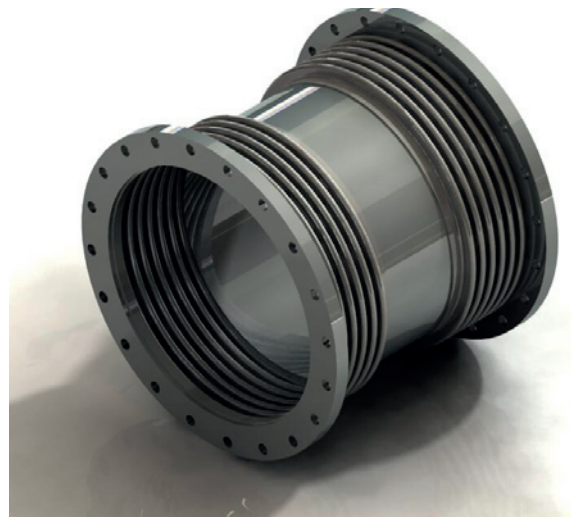
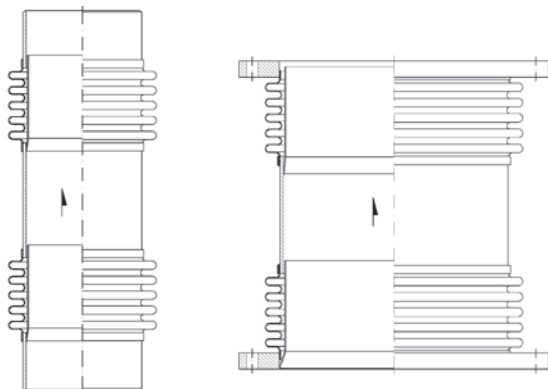


MWD

This type of Expansion Joint is made up of two bellows joined together by a central pipe. provided with welding ends.

FEATURES

- Allow axial, lateral and angular movements
- Accept large amounts of lateral deflection
- Do not restrain pressure thrust
- Adequate anchors and guides must be provided



MFD

This type of Expansion Joint is made up of two bellows joined together by a central pipe. provided with flanged ends

TYPE	SERIES	PRESSURE THRUST RESTRAIN	MOVEMENTS		
			AXIAL	LATERAL	ANGULAR
Universal Unrestrained	MWD MFD	NO	YES	SINGLE-PLANE	SINGLE-PLANE
				YES	YES
				MULTI-PLANE	MULTI-PLANE
				YES	YES

SAMPLE PICTURES

