

MRU, MRW & MRV

Rectangular Expansion Joints

MRU, MRW & MRV Series

DESCRIPTION

MRU
RECTANGULAR EXPANSION JOINT WITH U-SHAPED CONVOLUTIONS AND ROUND CORNER

One or more convolutions for low and medium pressures and full vacuum services.

The connection elements are available either with flanges or welding ends.

MRW
RECTANGULAR EXPANSION JOINT WITH V-SHAPED CONVOLUTIONS AND CAMERA CORNER.

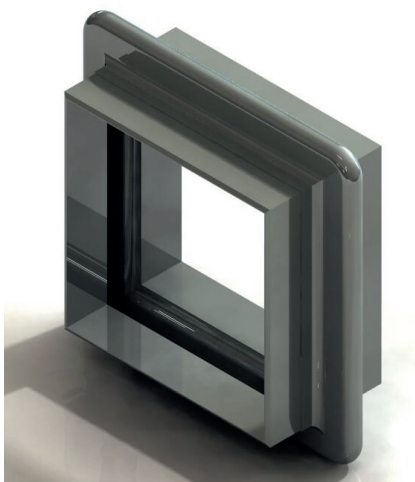
This model is characterized by the shape of its corner camera type and the V-shaped convolution. It is very flexible and used in low pressure and vacuum conditions systems. The connection elements are available either with flanges or welding ends.

MRV
RECTANGULAR EXPANSION JOINT WITH V-SHAPED CONVOLUTIONS AND MITER CORNER.

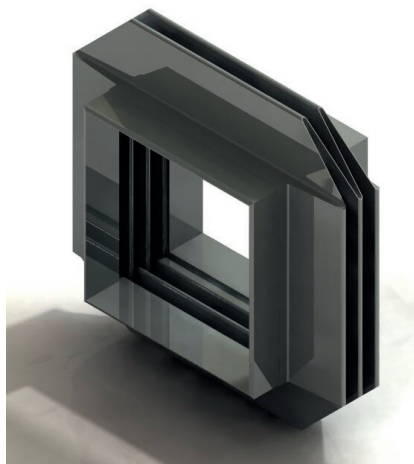
This model is characterized by the shape of its miter type corner and its V-shaped convolution. The corner can be either single or double. The connection elements are available either with flanges or welding ends.

Regardless of accessories, such as liners and covers, these models absorb all of the movements in any one length of piping but it is mainly used to absorb axial movements.

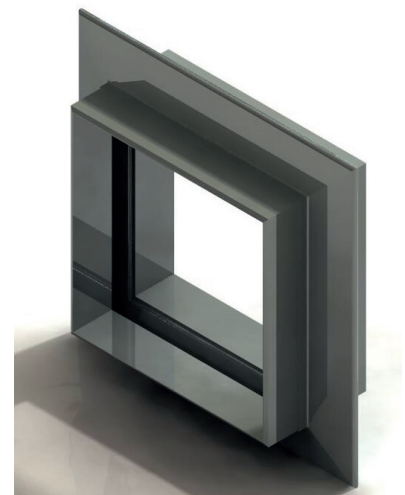
They do not restrain pressure thrust so adequate anchors and guides must be provided and they can be used only in piping systems that incorporate correctly designed anchors and pipe alignment guides.



MRU



MRW



MRV

TYPE	SERIES	PRESSURE THRUST RESTRAIN	MOVEMENTS		
			AXIAL	LATERAL	ANGULAR
RECTANGULAR	MRU	NO	YES	SINGLE-PLANE	SINGLE-PLANE
	MRW			YES*	YES**
	MRV			MULTI-PLANE	MULTI-PLANE
				YES*	YES**

(*) Limited use. Lateral movements may be absorbed with a twin bellows design

(**) Limited use. Some angular movement can be absorbed providing a specific design

FEATURES

- Absorbs axial, lateral, and angular movements
- Must be properly guided
- Does not restrain the pressure thrust
- Requires main and directional anchors

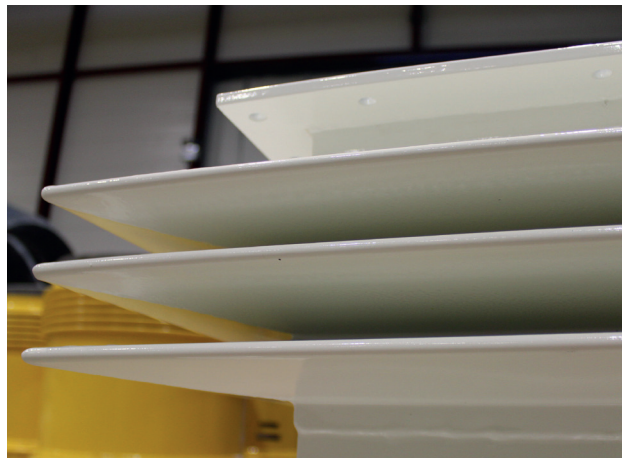
SAMPLE PICTURES



MRW



MRU



MRV

