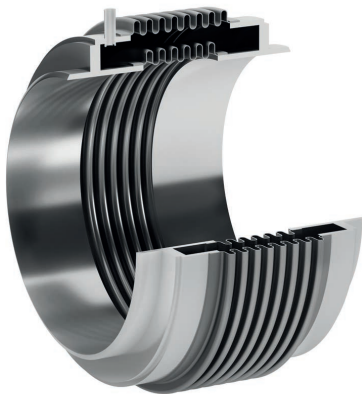


Jacketed

MJA series

Jacketed Expansion Joints are used in a set of particular circumstances such as when regular insulation is not sufficient and when the main fluid has to be kept at a fixed temperature or simply for security reasons.







This model involves using two bellows, one on the inside and one on the outside.



MJA

This model involves using two bellows, one on the inside and one on the outside.

Features

TYPE		SERIES				
Jacketed		MJA				
PRESSURE THRUST RESTRAINT		MOVEMENTS		MATERIALS		
	Axial				Austenitic Stainless Steels 304, 321, 316, 316L, 310, 309...	Sizes from DN-50 up to DN-10000
	Lateral	Single-plane				
		Multi-plane			Nickel Alloys Inconel, Incoloy, Hastelloy...	Single ply or multiply construction
	Angular	Single-plane			Carbon Steel P265GH, 16Mo3, 13 CrMo 44...	One or more convolutions
		Multi-plane				

Sample images

